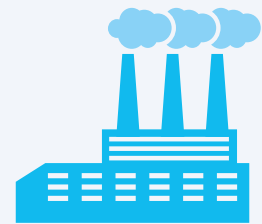




## INDUSTRY

In industrial workplaces, gases are omnipresent. To protect personnel and plant, the endangered areas must always be carefully monitored as dangerous concentrations of gas can arise at any time. Gas leaks caused by wear and vibration present a clear risk. The danger can be mitigated by using the correct gas detection system.



### INOSENT RECOMMENDS THE «PREMIUM» PRODUCT LINE FOR INDUSTRIAL USE

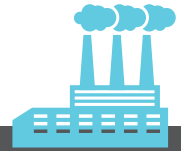
These powerful, multi-functional gas detection systems can fulfil the great demand for highly flexible systems. At the same time, they can manage up to 256 detectors, and offer many analogue or BUS-capable detectors as well as an integrated alarm memory that also can be accessed from a PC. Thanks to a powerful microprocessor, the self-diagnostic methods for detection and localisation of operational malfunctions are on a very high level. The system is designed for SIL1

or SIL2 systems and can also be used with explosion zones 1 and 2. The gas detectors are available both with and without display and can also be delivered in a metal housing. For the highest security requirements, we have developed gas detectors that fulfil SIL2 requirements. If there is no requirement for SIL2 levels, we recommend that the gas detector be used with the product lines Ultimate or Classic.

#### MEETS THE INDUSTRY'S HIGHEST STANDARDS: THE «PREMIUM» PRODUCT LINE



- RELIABLE MONITORING OF AMMONIA, SOLVENTS, PROPANE, METHANE AND HYDROGEN
- PREMIUM CONTROL MONITOR
- GAS DETECTORS FOR MONITORING NH<sub>3</sub>, SOLVENTS, C<sub>3</sub>H<sub>8</sub>, CH<sub>4</sub> AND H<sub>2</sub>; OTHERS CAN BE CONNECTED
- STANDARD AND EXPLOSION-PROTECTED FLASHING LIGHT
- STANDARD AND EXPLOSION-PROTECTED ALARM HORN



# PREMIUM



The INOSENT Premium product line is a high-performance, multi-functional gas detection system that is able to satisfactorily fulfil the increasingly demanding requirements for highly flexible systems. It is designed for SIL1 or SIL2 systems and can also be used with Explosion zone 1 or 2. The Premium product line features 256 analogue or bus-capable detectors and an integrated alarm memory that can be accessed from a PC.

A built-in microprocessor makes it possible to create self-tests, so that the system can easily be adjusted to the given conditions. The connection of gas detectors and remote

input and output modules is possible using two closed loops. In addition, this state-of-the-art gas detection system has 8 potential-free relay outputs as well as the possibility of expanding the gas monitor with additional relay outputs or open-collectors, up to 256 outputs.

The INOSENT Premium product line is available in a metal enclosure or as a 19-inch rack unit.



## OVERVIEW:

- 2 YEARS WARRANTY
- ROBUST WALL MOUNT
- PROGRAMMING USING PC
- EVENT LOG VISIBLE ON FRONT DISPLAY OR PC
- DISPLAY OF THE MEASURING RANGES, ALARM LEVELS AND ALARM GROUPS

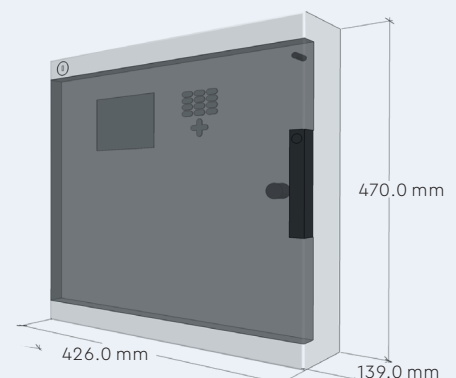
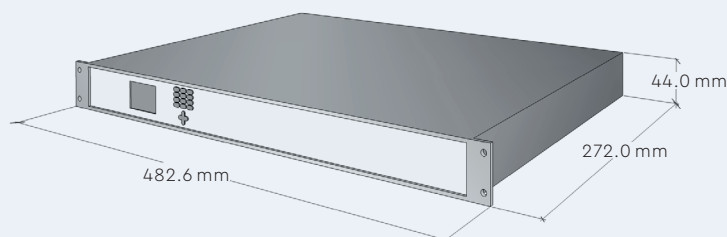
## SPECIAL FUNCTIONS:

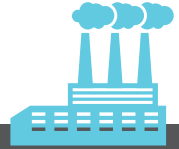
- PERFORMANCE TEST OF RELAY AND INHIBIT FUNCTIONS
- BUILT-IN LOGGING FUNCTION (USING KEYS OR ACCESSIBLE USING SOFTWARE)

## TECHNICAL SPECIFICATIONS

**SUPPLY VOLTAGE:** 24 VDC | LED status display for operational status and malfunctions | LED alarm display for pre-alarm and main alarm | **SIGNAL INPUT:** 4-20mA, Modbus RTU | 8 relay outputs can be expanded to up to 256 outputs | Up to 256 open-collector outputs

## DIMENSIONS





**INOSENT PREMIUM**  
(SIL 1 OR SIL 2)  
STANDARD – ANALOGUE SYSTEM

**SIGNAL:**

**4 - 20 mA**

**MAX. QUANTITY GAS DETECTORS:**

**256**



— SUPPLY TO GAS DETECTORS:  
3 × 0.75 mm<sup>2</sup>, shielded,  
max. 1000 m

— SUPPLY TO ALARM UNITS:  
24 VDC or 230 VAC

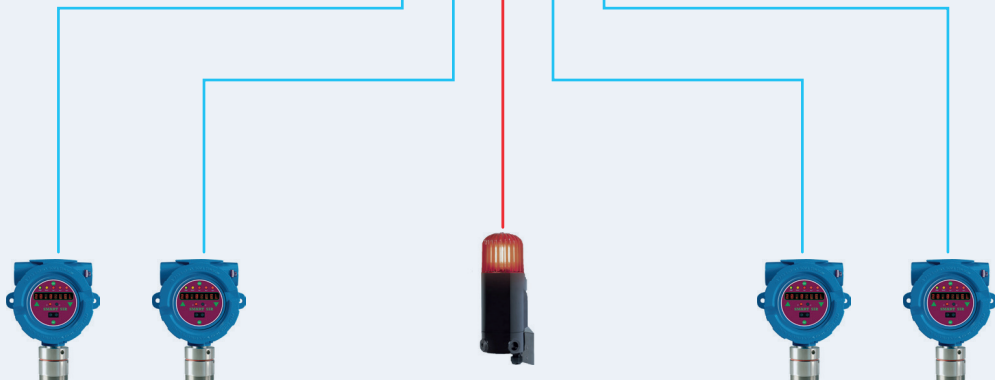


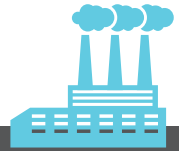
**STG/8REL**  
internal 8 x Relay  
Output-Module



**STG/IN8-S**  
internal 8 x 4-20mA  
Input-Module

**AREA:**  
E.G. PRODUCTION





## INOSENT PREMIUM

(SIL 1 OR SIL 2)  
DIGITAL SYSTEM

SIGNAL:

MODBUS

MAX. QUANTITY GAS DETECTORS:

256



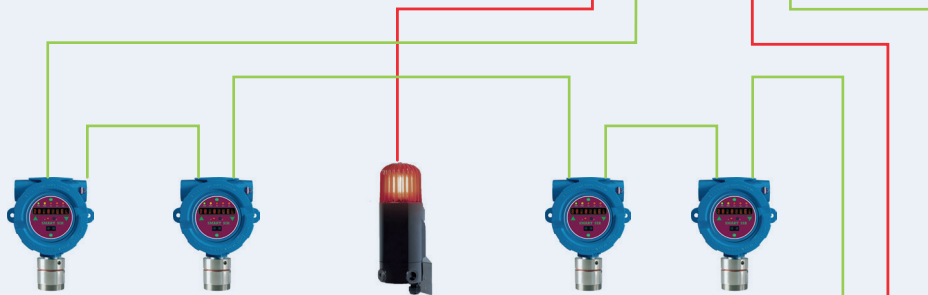
STG/8REL

internal 8 x Relay  
Output-Module

— SUPPLY TO ALARM UNITS:  
24 VDC or 230 VAC

— SUPPLY TO GAS DETECTORS:  
INOSENT MODBUS-CABLE LI HCH:  
Cable  $2 \times 2 \times 0,8 \text{ mm}^2$ , shielded, coloured,  
max. 1200 m

AREA 1  
E.G. SOLVENTS-DETECTION  
ZONE 1



AREA 2  
Z.B. SOLVENTS-DETECTION  
ZONE 2

