

# BioEntry R2

Compact Fingerprint Reader



Suprema BioEntry R2 is a compact fingerprint reader exclusively designed for centralized access control systems. Packed in a slim, mullion-type design, BioEntry R2 provides high-definition fingerprint image capture, minutiae extraction as well as dual-frequency multi RF card reading capability. Combined with Suprema's intelligent biometric controller, the CoreStation, BioEntry R2 completes biometrics-driven access control system with enhanced simplicity and level of security of centralized system topology.

# BioEntry R2

## Compact Fingerprint Reader

### Features



#### Multi RFID card reading

- LF(125kHz), HF(13.56MHz) dual-band
- Reads all primary card types (EM, MIFARE, MIFARE Plus, DESFire/EV1, FeliCa, NFC)



#### Mobile Card reading

- Support NFC mobile card with BioStar 2 Mobile App



#### Field-proven fingerprint technology

- Latest Suprema fingerprint algorithm
- High-precision OP5 optical sensor



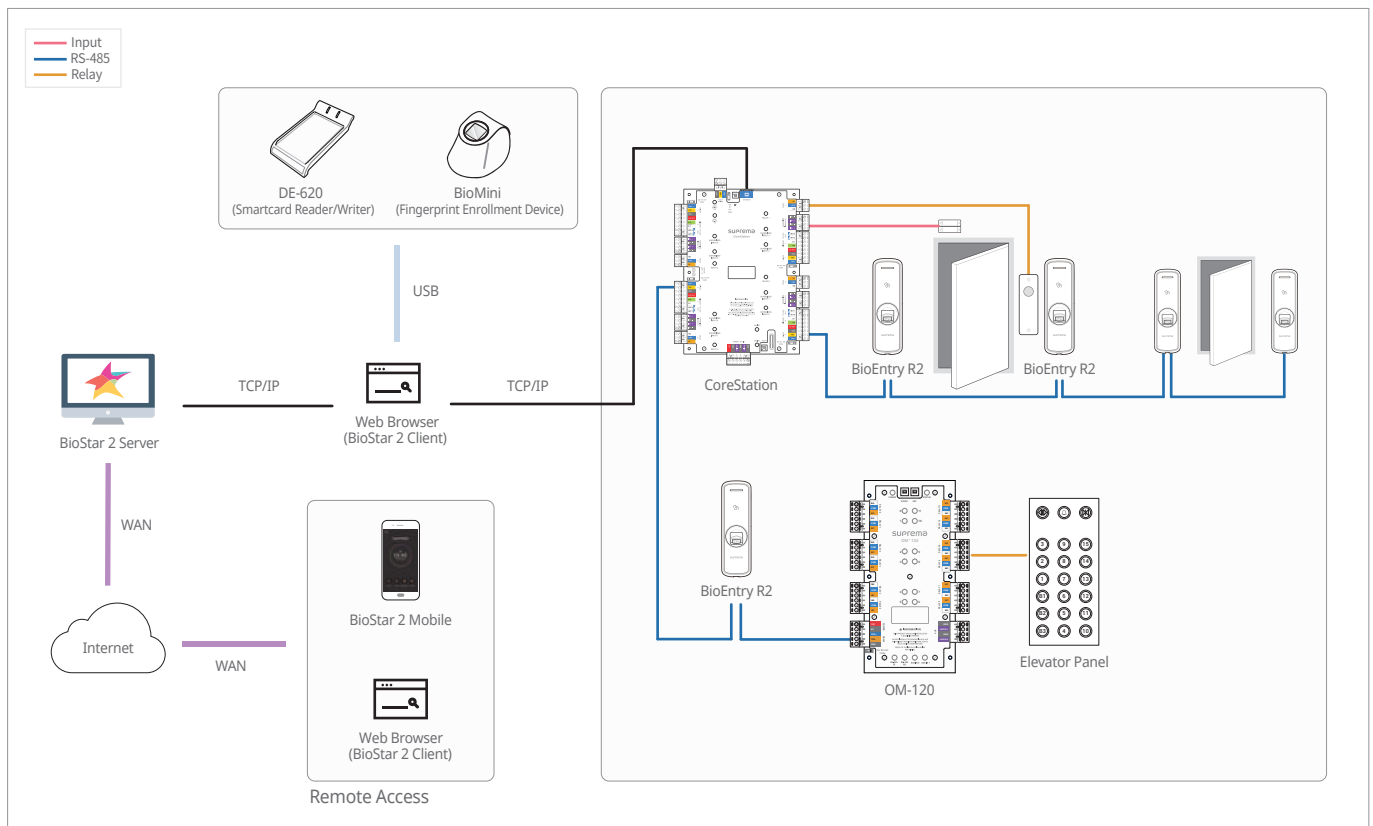
#### Standardized communication

- Open Supervised Device Protocol (OSDP)

### Specifications

|                        |  |
|------------------------|--|
| Biometric              | Fingerprint  |
| Sensor Type            | Optical Sensor (OP6)   |
| Template               | SUPREMA / ISO 19794-2 / ANSI 378                                   |
| Extractor / Matcher    | MINEX certified and compliant                                      |
| RF Option              | 125kHz EM & 13.56MHz MIFARE, MIFARE Plus, DESFire/EV1, FeliCa, NFC |
| CPU                    | 1.0 GHz  |
| Memory                 | 32MB Flash + 32MB RAM  |
| LED                    | Multi-Color  |
| Sound                  | Multi-tone Buzzer  |
| RS-485                 | 1ch Slave, OSDP V2.1.6   |
| Tamper                 | Supported  |
| Power                  | DC 12V   |
| Operating Temperature  | -20°C ~ 50°C   |
| Operating Humidity     | 0% ~ 80%, non-condensing   |
| Dimensions (WxHxD, mm) | 50 x 164 x 37.5  |
| Weight                 | 158g   |
| Certificates           | CE, FCC, KC, RoHS, REACH, WEEE                                     |

### System Configurations



### Suprema Inc.

17F Parkview Tower, 248, Jeongjail-ro, Bundang-gu, Seongnam-si, Gyeonggi-do, 13554, Rep. of KOREA

Tel: +82 31 783 4502 | Fax: +82 31 783 4503 | Inquiry: sales@supremainc.com | www.supremainc.com

©2018 Suprema Inc. Suprema and identifying product names and numbers herein are registered trademarks of Suprema, Inc. All non-Suprema brands and product names are trademarks or registered trademarks of their respective companies. Product appearance, build status and/or specifications are subject to change without notice.

[AHL-BER2-180110-03-EN]

**Suprema**  
BIOMETRICS & SECURITY