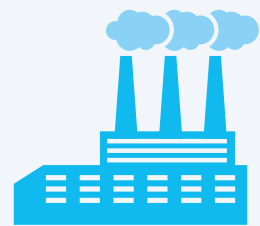




## INDUSTRY

In industrial workplaces, gases are omnipresent. To protect personnel and plant, the endangered areas must always be carefully monitored as dangerous concentrations of gas can arise at any time. Gas leaks caused by wear and vibration present a clear. The danger can be mitigated by using the correct gas detection system.



INOSENT RECOMMENDS THE «**ULTIMATE**» PRODUCT LINE FOR INDUSTRY GAS DETECTION.

With the «**ULTIMATE**» system, gas leaks can be detected at an early stage and dangerous concentrations of gas prevented: In addition to optical and acoustical alarms, the gas flow will be shut off, utilising a solenoid valve. Visual presentation of the gas detectors, measured gas values and alarm status are presented on the Ultimate touch screen, achieving an excellent overview over the events and measurement data. Logging of the gas concentrations, alarms and malfunctions, as well as a web server and a Modbus RTU output for communication with the

building control system, are all integrated into the system.

The gas detectors are available both with and without display and can also be delivered in a steel housing. The detectors can be used for ATEX explosion zones 1 and 2 and for the highest security requirements you can use our gas detectors which fulfil SIL2 requirements (Premium product line). For fast checking of gas monitoring data, suitable displays can be set up outside the Ex rated zone.

### EASY TO INTEGRATE, WITH AN IDEAL DESIGN FOR INDUSTRY: THE «**ULTIMATE**» PRODUCT LINE



- RELIABLE MONITORING OF VARIOUS GASES, SUCH AS CARBON MONOXIDE CARBON DIOXIDE, HYDROGEN SULPHIDE, PROPANE, AMMONIA, PROPANE, AND MANY MORE.
- ULTIMATE CONTROL PANEL
- GAS DETECTORS FOR MONITORING O<sub>2</sub>, CO, H<sub>2</sub>, CO<sub>2</sub>, NH<sub>3</sub>, C<sub>3</sub>H<sub>8</sub>, O<sub>3</sub>, SiH<sub>4</sub>, PH<sub>3</sub>, H<sub>2</sub>S; OTHERS CAN BE CONNECTED
- LED-LIGHT WITH INTEGRATED ALARM HORN
- FLASHING LIGHT
- ALARM HORN



## ULTIMATE

The Ultimate product line has been designed specifically for monitoring the concentration of gases. The gas monitor has an integrated 7-inch touch screen for the graphical display, for operation and for programming. In addition, logging of gas concentration levels, alarms and malfunctions, as well as a web server and a MODBUS RTU output for communication with the building control system, are all integrated into the Ultimate system.



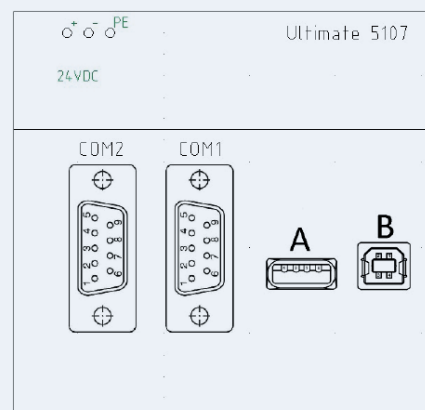
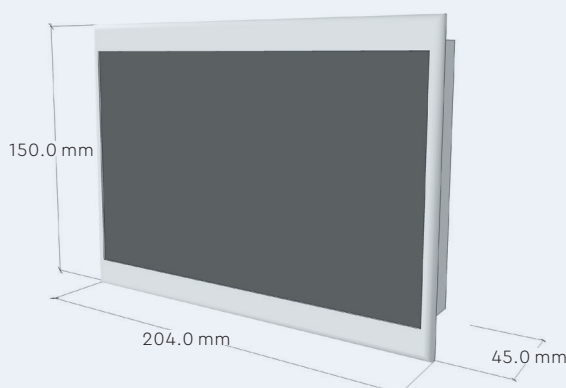
### OVERVIEW:

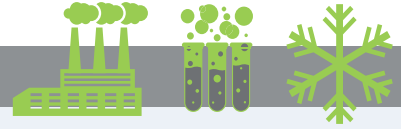
- 2 YEARS WARRANTY
- PRACTICAL BUILT-IN INSTALLATION
- 7-INCH TOUCH-SCREEN DISPLAY (ALSO AVAILABLE IN OTHER SIZES)
- ADDITIONAL TOUCH DISPLAYS CAN BE CONNECTED ON THE SAME BUS
- SIMPLE PROGRAMMING DIRECTLY ON THE TOUCH-SCREEN
- UP TO 255 BUS COMPONENTS
- EMBEDDED WEB SERVER (TYPE ULTIMATE 5207)
- INTEGRATED LOGGING OF GAS CONCENTRATIONS, ALARMS AND MALFUNCTIONS
- DISPLAY OF MEASURING RANGES, ALARM LEVELS AND ALARM GROUPS
- MAK VALUE MODE FOR NATIONAL DIRECTIVE-COMPLIANT LABORATORY MONITORINGS

### TECHNICAL SPECIFICATIONS

**SUPPLY VOLTAGE:** 24 VDC | Status display for operation and malfunctions on a well-organised colour display | 2 x USB ports for download of history and upload of system maps | 1 x RJ-45 connector for the web viewer | **DIGITAL SIGNAL INPUT:** 255 x digital via 2 x RS485 bus ports | 8 external relay contacts on the expansion module | 8x4-20mA analogue signal inputs on the expansion module | **AVAILABLE ACCESSORIES:** Modbus-enabled LED alarm light with integrated horn, Expansion modules for additional relay outputs or analogue inputs

### DIMENSIONS AND CONNECTIONS





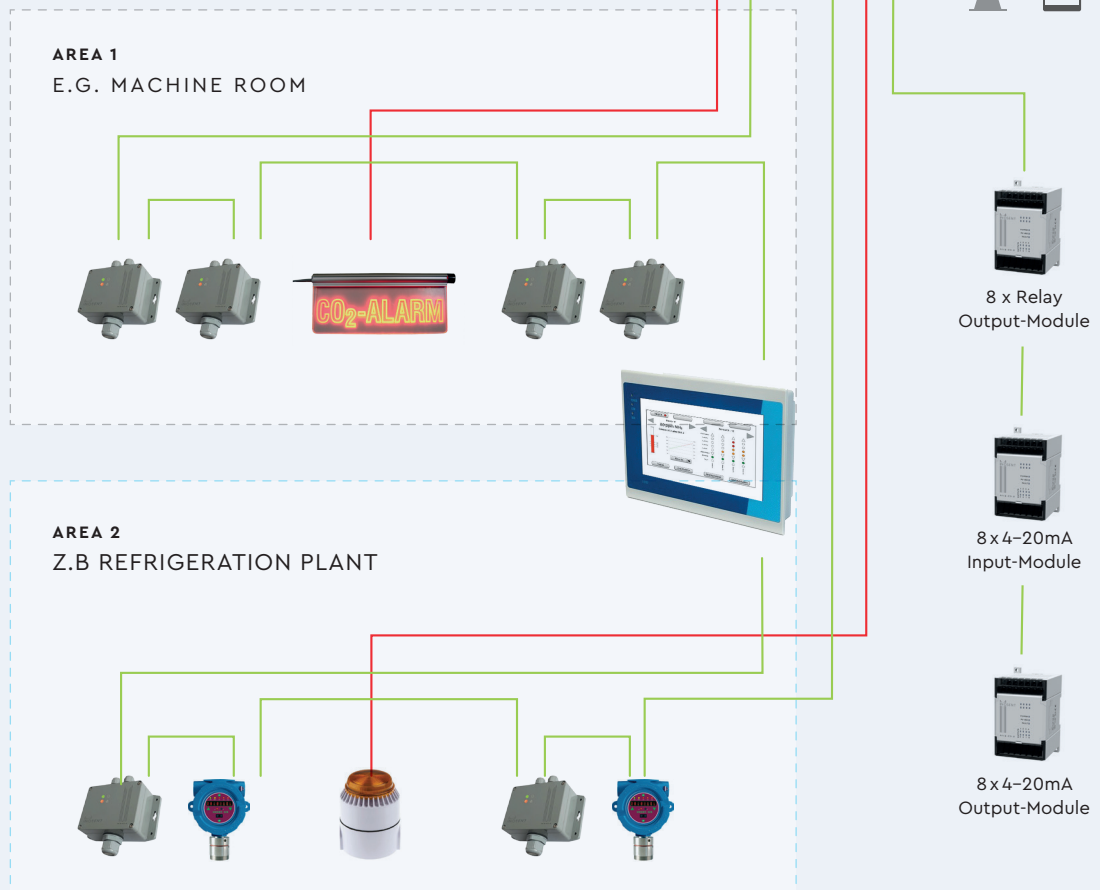
## INOSENT ULTIMATE WITHOUT DIGITAL ALARM UNITS

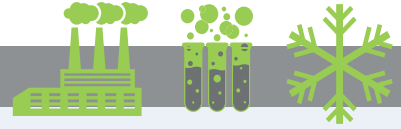
SIGNAL:  
MODBUS

MAX. QUANTITY GAS DETECTORS:  
255



- SUPPLY TO ALARM UNITS  
24 VDC or 230 VAC
- SUPPLY TO GAS DETECTORS:  
INOSENT MODBUS-CABLE LI HCH:  
Cable 2 × 2x0,8 mm<sup>2</sup>, shielded, coloured,  
max. 1200 m
- ETHERNET-CONNECTION:  
8-pin RJ45, 10/100 Mbps, Auto MDI/MDIX,  
Auto-Negation





## INOSENT ULTIMATE WITH DIGITAL ALARM UNITS

SIGNAL:  
MODBUS

MAX. QUANTITY GAS DETECTORS:  
255



— SUPPLY TO GAS DETECTORS AND ALARM UNITS:  
INOSENT MODBUS-CABLE LI HCH:  
Cable  $2 \times 2 \times 0,8 \text{ mm}^2$ , shielded, coloured,  
max. 1200 m

— ETHERNET-CONNECTION:  
8-pin RJ45, 10/100 Mbps, Auto MDI/MDIX,  
Auto-Negation

